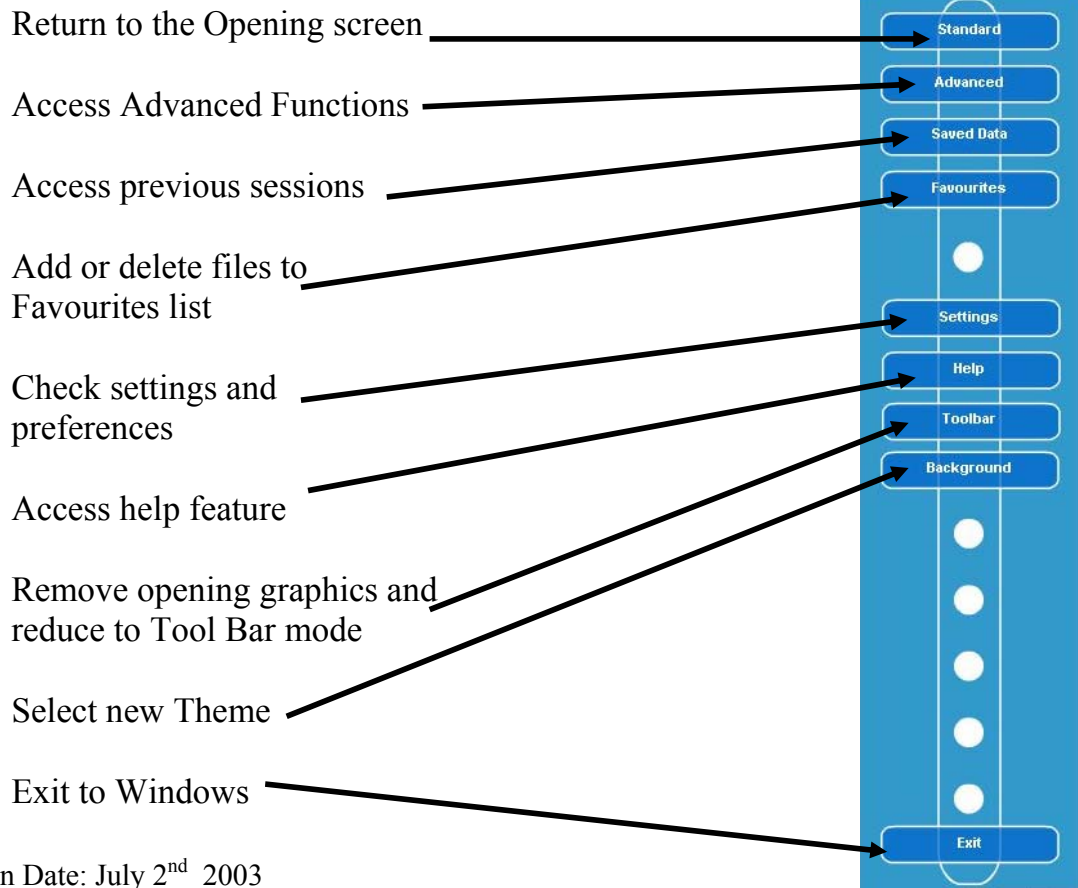
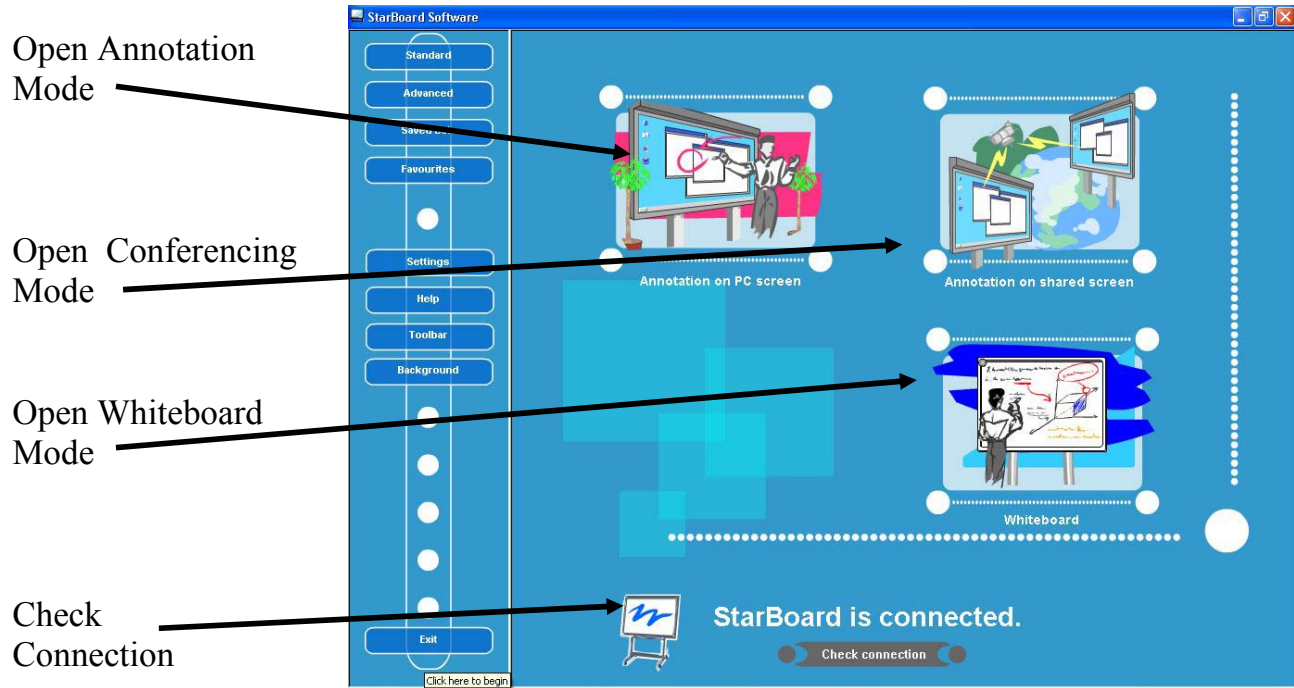


Hitachi StarBoard Software 5-1 Quick Reference Guide

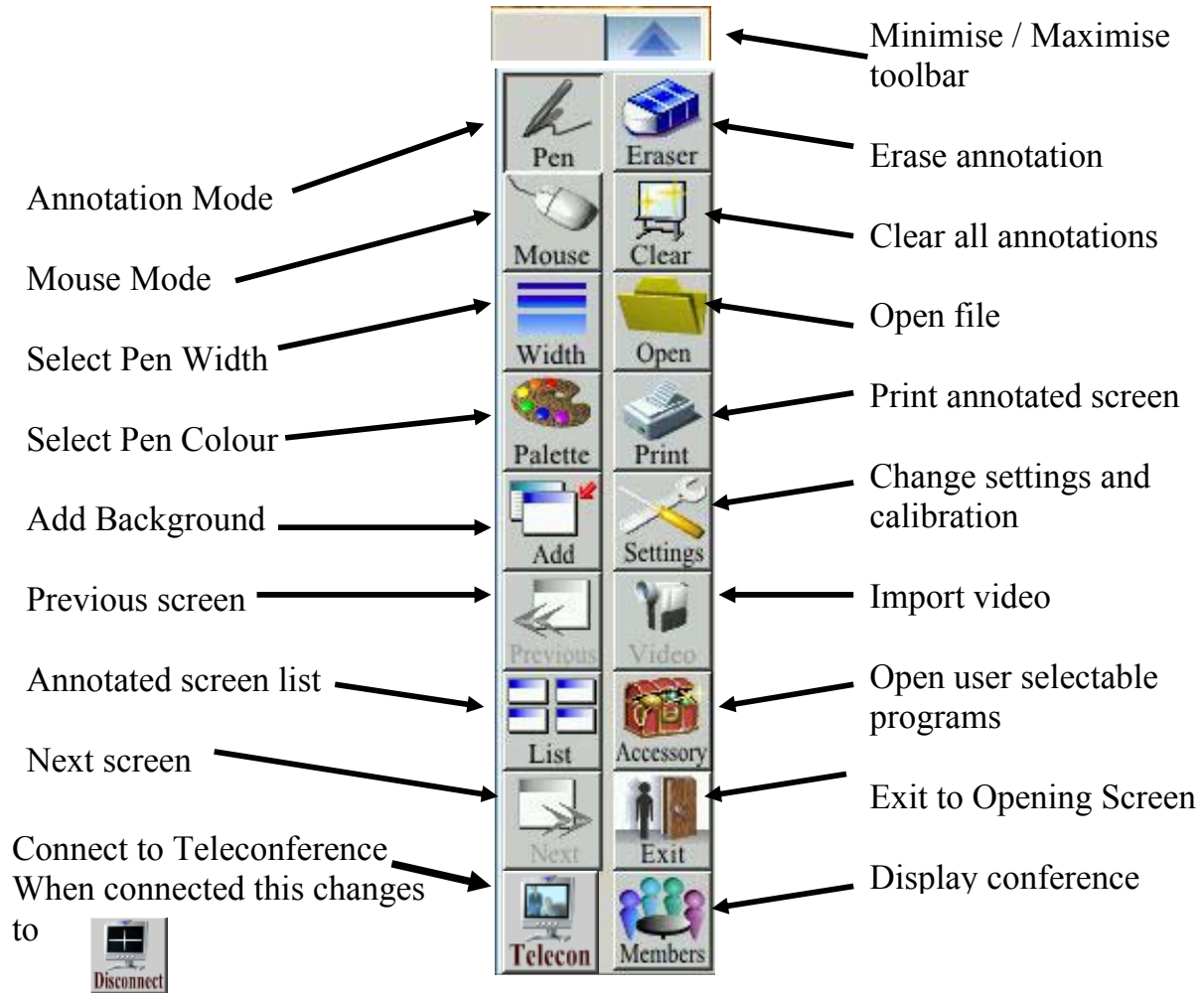
Opening Screen

Many different themes can be selected for the opening screen. One of the more common options is shown below.



Annotation Mode and Conference Mode

All toolbars can be configured to show only the icons preferred by the user in the order and size required. The image below is a fully populated toolbar that is used for both Annotation and Conference modes of operation with the exception of one icon which is explained below.



Click to Disconnect from Teleconference

Advanced Menu

Selecting the Advanced menu option will show the following screen and allow selection of Object Management mode.

Option Software Package



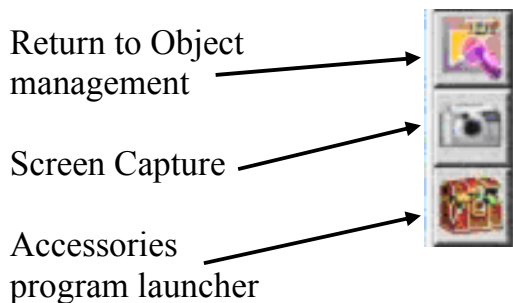
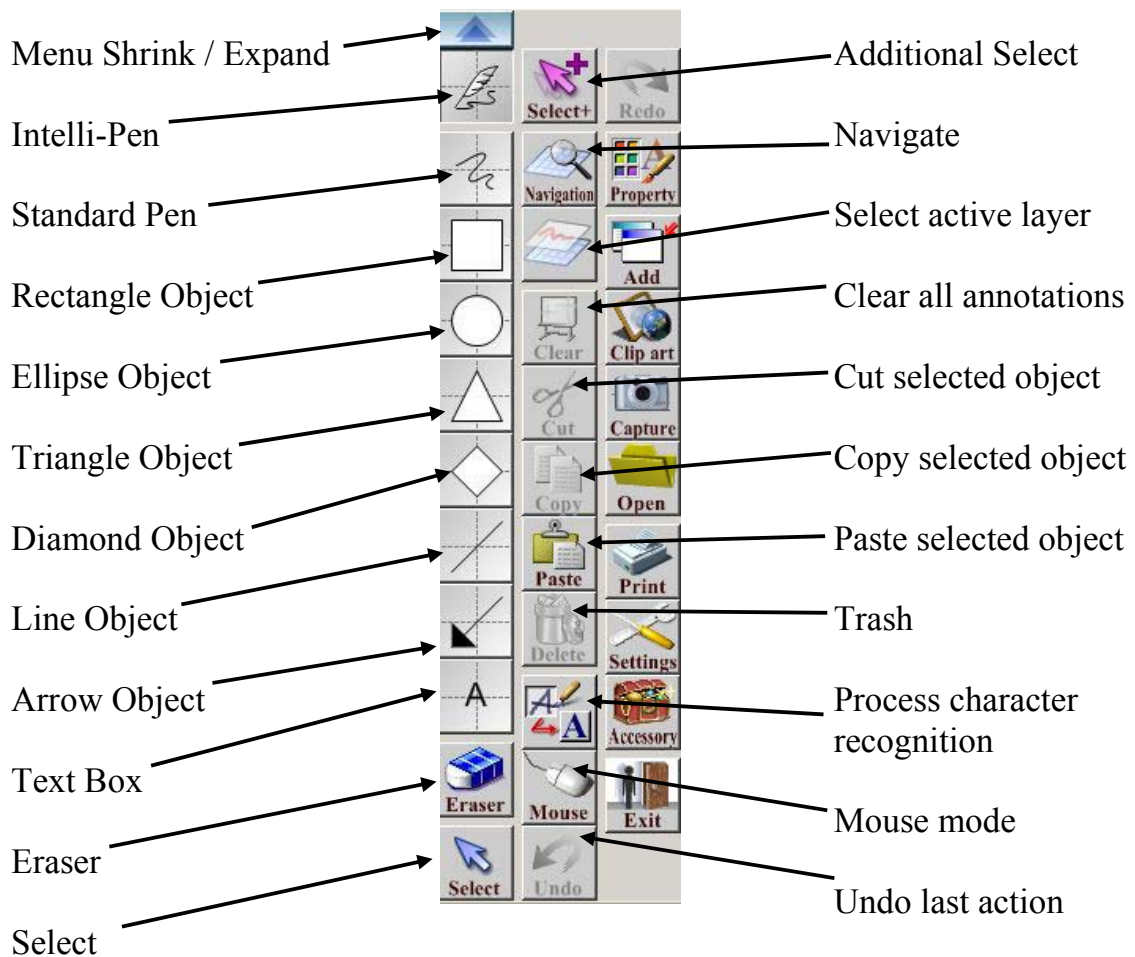
Object Management Package

Easy, simple interface and the state of the art interactive software. New advanced features:

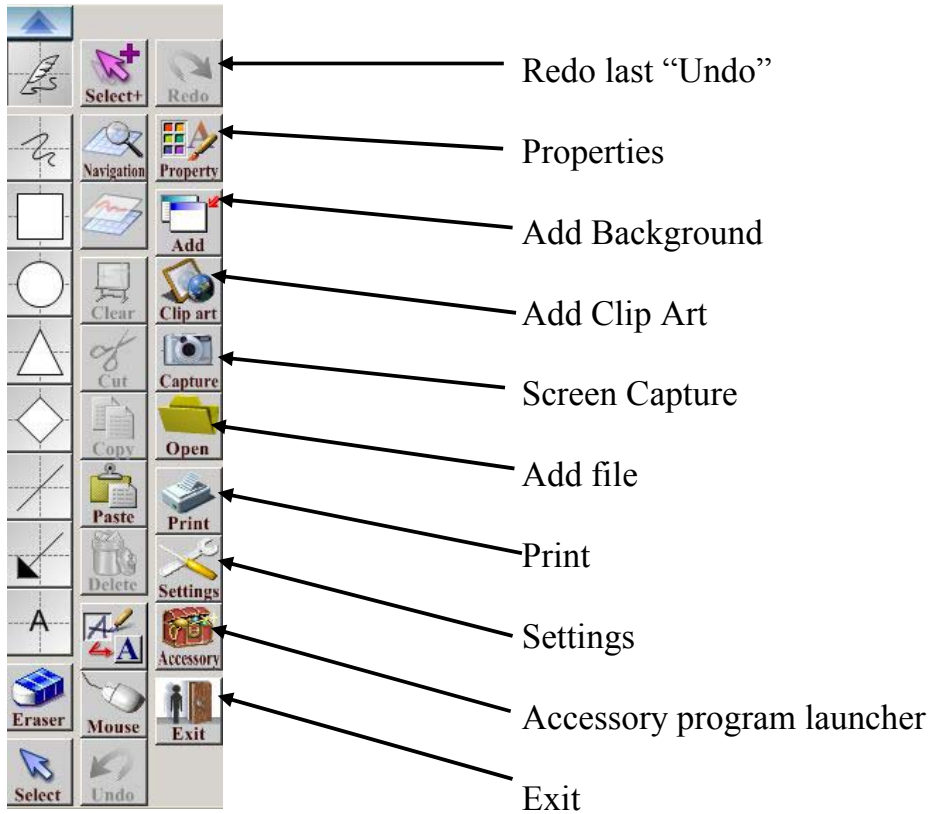
- Geometric object recognition for lines, circles, rectangles, etc.
- Object management features for moving, editing any written objects.
- Seamless page scrolling.

Object Management Mode

When using the software in Object Management Mode all annotations, images and shapes are created as objects. All objects can be resized and repositioned and have properties which can be altered. Object properties differ slightly depending on the type of object but generally the colour, fill area and line thickness can be altered. When the object is selected it's property dialogue box can be opened and the various changes required can be implemented.

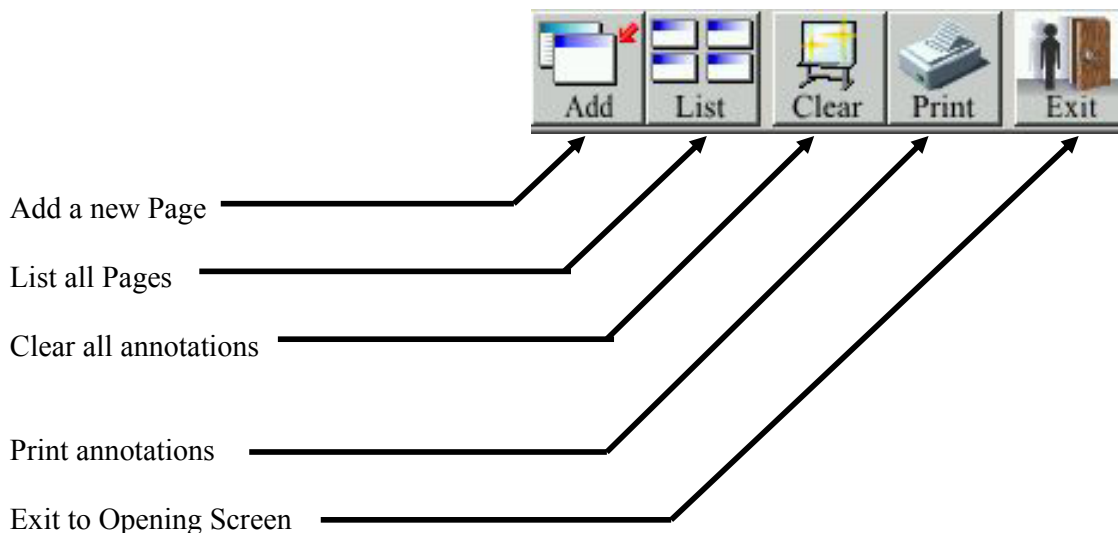


Mouse mode sub menu



Whiteboard Mode – No Projector

The Whiteboard (no Projector) mode of operation is only available with front projection StarBoards or Cambridge Boards. When selected, the computer screen displays a white area representing the surface of the Whiteboard. Using the special electronic pen which carries a standard dry-erase marker, the StarBoard or Cambridge Board can be used as a standard whiteboard and the computer will capture the written information. Four buttons on the StarBoard and Cambridge Board are operated with the eraser end of the electronic pen and are used to save data, select new pages, clear electronic writing from the current screen and Print the current screen to the default printer. These buttons are also selectable from the computer screen.



WhiteBoard Mode – Using Projector

The Whiteboard (Using Projector) mode of operation provides an electronic whiteboard function. When selected a white area representing the surface of the Whiteboard is displayed. Using the electronic pen the StarBoard or Cambridge Board can be used as a standard whiteboard and the computer will capture the written information.

